

High School Erected In 1914; Addition, 1928

FIRST TOWNSHIP HIGH SCHOOL TO BE BUILT IN LOGAN COUNTY

(February, 1914)

The dedication exercises were held Friday, Jan. 30, 1914. Dean Eugene Davenport from the University of Illinois, gave the principal address. The business houses of the city were closed during the program and the people of the entire community generously contributed to the interest of the occasion by their attendance.

The building is a handsome two-story and basement structure, 111x65 feet with a boiler room extension of 38 feet, and is built of vitrified brick with Bedford stone trimmings. It contains 22 rooms including a gymnasium, library, manual training and domestic science departments. Toilets and shower baths are located at each end of the building. An assembly room 63x44 feet, seats nearly 500 persons, and has a stage 20x22 feet. The building is plumbed throughout for hot and cold water and is warmed by two boilers.

There is a fine ventilating system. Telephone connections in all rooms and joined with the city system outside. The lighting is properly admitted in all respects. The building is fire-proof and cost \$40,000.

Besides the regular sessions there is now being held the short course in agriculture and domestic science so that the school plant is serving the whole community and adults as well as children are benefitted. The school is accredited at the University of Illinois with 19 credits when but 15 are necessary.

The prospects for the school are very encouraging. Its future will be watched with interest as it is the first Township High School to be established in Logan county.

The Board of Education is composed of the following men: C. T. Anderson, President; O. W. Mayer, Clerk; H. S. Buckles, August Unland, C. E. West, F. W. Meister and C. C. Munce.

The instructors are: L. F. Full-wiler, principal; Marie Dean, Eva Perrin, J. P. Douglas and R. V. Lindsey.

—Co. School Messenger.

12 Sections of Non-High (Aug. 28, 1947)

When nobody appeared Wednesday, Aug. 20, offering objections to the division of the remaining non-high school territory in the Chestnut area, among Beason, Latham and Mount Pulaski high school districts, as suggested by the county school survey committee, E. H. Lukenbill, superintendent of the Logan county schools, approved the annexations to the various districts.

Approximately 12 sections to Mount Pulaski, and one and a half sections to Latham. Mr. Lukenbill will file maps with the county clerk showing the revisions, and make up new maps showing the boundary changes of Logan county high school districts.

LAUGHERY SCHOOL PERFECT ATTENDANCE (February, 1915)

The Laughery School, near Mt. Pulaski, reports that the fourth month of school was completed with a perfect attendance record. The school is to be congratulated upon this achievement. Many of the school ills and disappointments would be eliminated altogether if pupils would attend regularly.

ASSESSED VALUATION THEN AND NOW

Assessed Valuation, Rate and Levy for school districts of Logan County, Illinois, in 1914, were:—

No.	District Name	Assessed Val.	Levy	Rate
28	Mt. Pulaski Twp. High School	\$ 1,545,074	\$ 10,000	.66
33	Mt. Pulaski Grade School	669,144	8,500	1.30
1960 VALUATION				
28	Mt. Pulaski Twp. High School	\$31,068,000	\$140,000	.55
33	Mt. Pulaski Grade School	23,000,000	120,000	.49

VOTERS AUTHORIZE NEW ADDITION TO HIGH SCHOOL (June 28, 1928)

The voters of the Mount Pulaski Township high school district at an election held this spring authorized the building of an addition to the high school building and the issuing of \$20,000 bonds. Plans are now being prepared for the improvement. The addition will be built this summer. The addition will include 8 or 10 class rooms and a gymnasium-auditorium with seating capacity of about 1500 people.

When this addition is completed, Mount Pulaski will have a high school plant comparable with any high school building for a town of its size in this section of Illinois.

—Lo. Co. School Messenger

DEDICATED NEW H. S. ADDITION NEW YEAR'S, 1929 (February, 1929)

The new addition to the Mount Pulaski high school building is nearing completion. The work on the building had sufficiently progressed to permit dedicatory exercises to be held in the large gymnasium-auditorium on New Year's Day.

The Mount Pulaski township high school orchestra provided music for the dedicatory exercises. C. W. Whitten, manager of the Illinois High School Athletic Association, gave the dedicatory address. He spoke on the place of athletics in the educational program. The address was very appropriate for the occasion. Following the address, the Mount Pulaski and Elkhart basketball teams engaged in a spirited game of basketball.

—Co. School Messenger

20 Sections Added (May 1, 1947)

Mount Pulaski Township High School District was enlarged on Saturday by some 20 sections of land as the result of voting in non-high territory in the surrounding area.

In the Cornland area where 15 sections of land were involved, the vote was 29 to 0 in favor of joining the Pulaski District, while in Chester where a half-mile strip along the south side of the township sought annexation, the vote was 9 to 1 For. The voters in Pulaski District voted 38 to 1 to approve the annexation.

In Laenna township a small block of non-high territory which lies close to Mount Pulaski, voted 15 to 9 against joining the Latham high school district. Latham voters approved it.

GEO. SCHAHL SERVES 40 YEARS AS DIRECTOR (June, 1937)

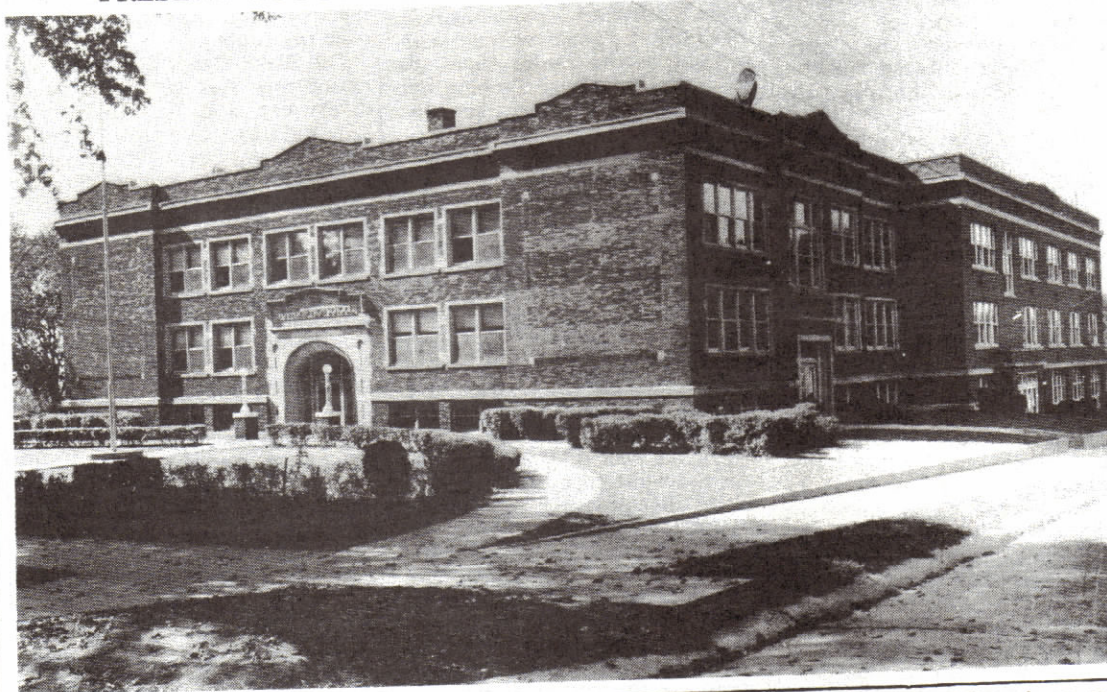
George Schahl, who is retiring as school trustee in Mount Pulaski township, has served as a school director and trustee for 40 consecutive years.

He began as director for the French's Chapel School when 21 years of age and for the past 27 years has been school trustee in Mount Pulaski township.

In behalf of the citizens of Mount Pulaski Township, we desire to express our appreciation to Mr. Schahl and to thank him for his 40 years of faithful service to the cause of education.

—School Messenger

PRESENT MOUNT PULASKI TOWNSHIP HIGH SCHOOL



(December 1929)

The Mount Pulaski Township high school building pictured above, shows the new addition which was erected last year at a cost of about \$50,000. The original building was erected in 1912 when the school had an enrollment of about 60 pupils. The enrollment has increased to 150 pupils and new departments of instruction have been added, thus it became necessary to enlarge the building.

The new addition contains a basement and two stories of classrooms on the front side and at the rear a gymnasium-auditorium. On the basement floor are two large rooms for manual training and mechanical drawing and a boys' toilet and shower

room. On the first floor are two classrooms, a large sewing room, foods laboratory and dining room. On the second floor are two classrooms and two large rooms for bookkeeping and typewriting. The corridors and stairways are of terrazo and other fire-proof materials.

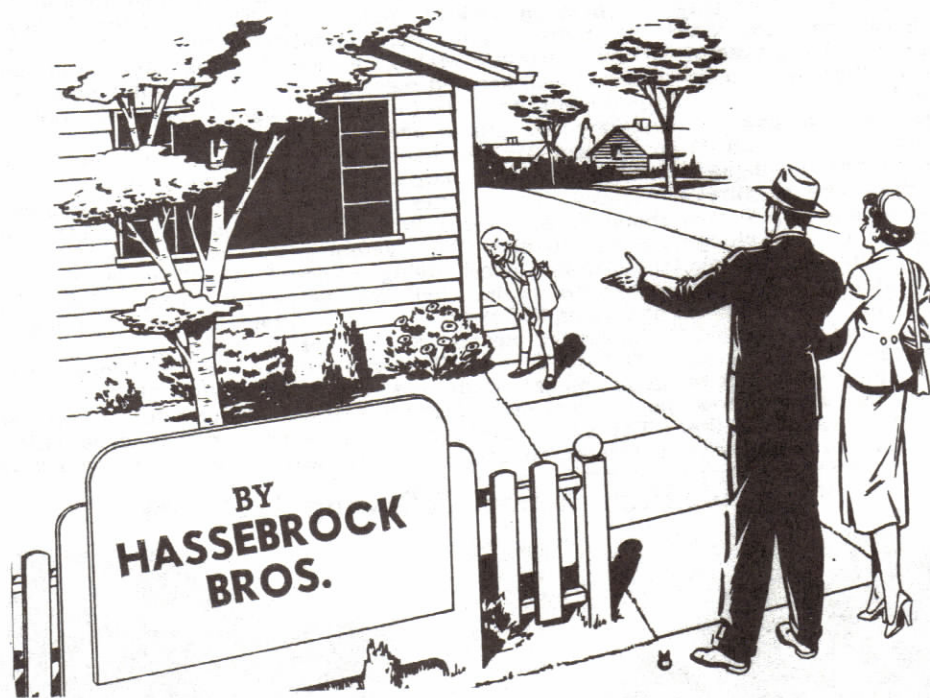
The gymnasium-auditorium is one of the best in this section of the state. It will seat 1000 to 1200 people. It is well constructed. Even the ceiling of the room was so constructed as to provide proper acoustic properties. A large stage has been provided. The gymnasium in the older part of the building has been utilized. In this the stage and dressing room were built. The new addition was fitted onto the old

part of the building in a very successful manner giving harmony and unity to the entire structure. Mount Pulaski now has a school plant which will serve all of its school and community needs.

The board of education that had charge of the building program, included following men: J. M. Rothwell, president; H. V. Wynd, secretary; Gene C. Clear, John H. Tendick, Charles Ey, John Hershey and George Rupp.

The faculty for the present school year includes, Lloyd L. Hargis, Principal; D. L. Barr, E. H. Beaver, George S. Dertinger, Grace E. Moore, Lillian Moore, Helena Luther, Nellie F. Orr, Dorothy Vose, Thelma Ebert and Paul Merry.

Fine Homes FOR A fine city



In these past 125 years the types of residences constructed in Mount Pulaski have changed greatly. We're helping Mount Pulaski keep pace with the newest trends by building fine homes that offer the best in comfortable, modern living.

Mount Pulaski is a fine city and a good place to live. We are proud to be a part of the community and offer our

HEARTIEST CONGRATULATIONS ON THE CELEBRATION OF THE SIL-TENNIAL YEAR

HASSEBROCK BROTHERS

LOREN

VERNON