

SINCE 1903— We've Played an Important Part in the Growth of Mount Pulaski

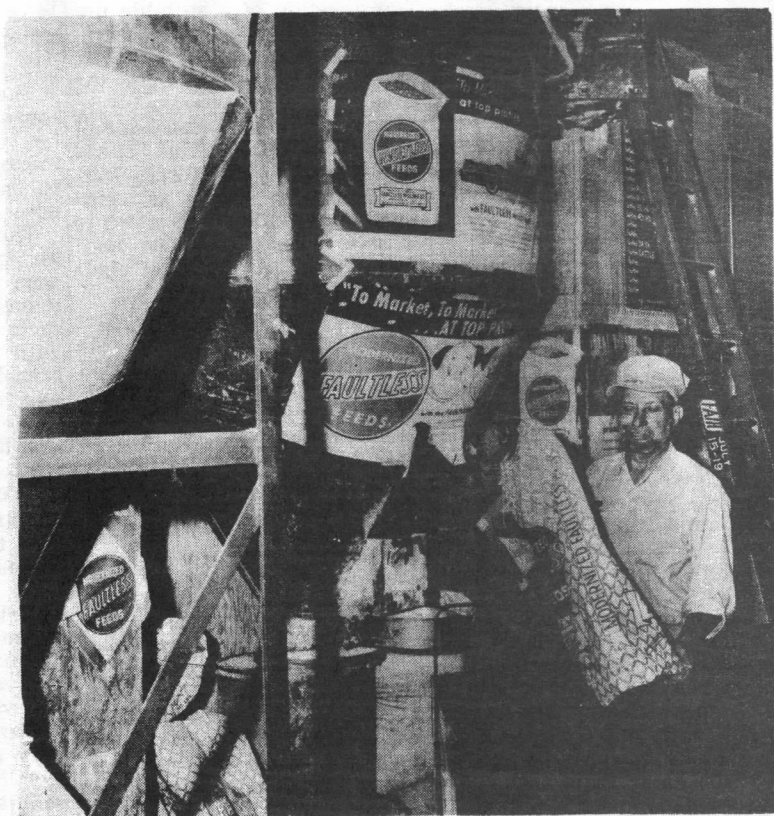
As the rich farmlands that surround Mount Pulaski were cleared by the pioneers, the production of grain in the area increased and nearby elevators were needed to provide a convenient place where farmers could sell their grain.

For the past 58 years, it has been our pleasure to play a vital and intimate part in the growth of our community by making our elevators an ideal place for farmers to bring the fruit of their labors. We also serve area farmers by the custom grinding and blending of feeds for their livestock.

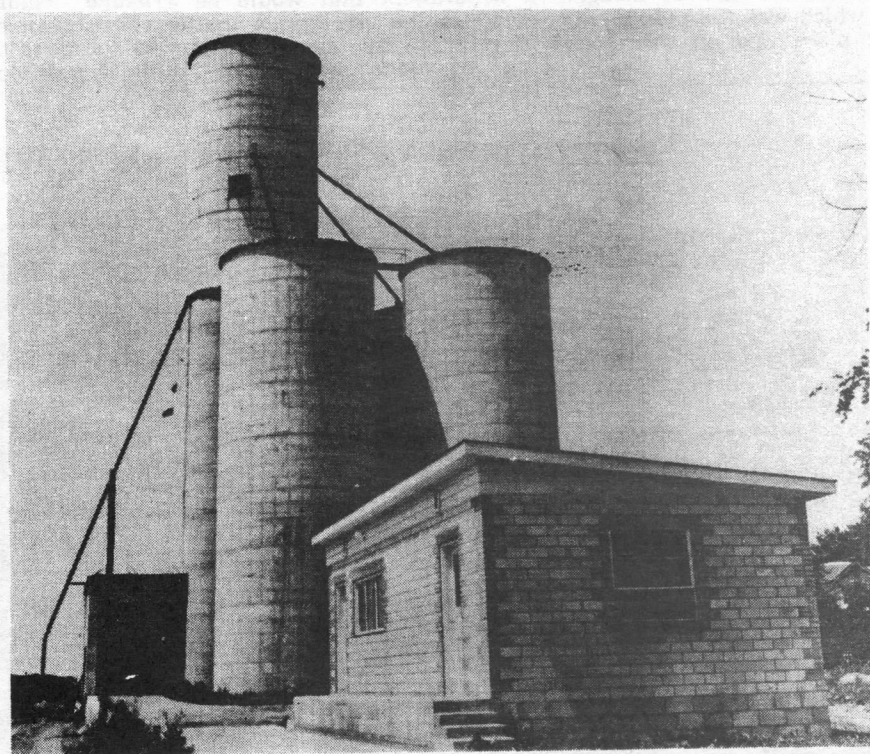
It has also been our pleasure and privilege to supply much of the lumber and other materials that have gone into the building of the modern homes of Mount Pulaski, thus helping many local residents achieve the satisfaction that comes from owning their own homes.

We are proud of the part our firm has played in the development and growth of Mount Pulaski, but we also feel a sense of dependence upon the customers and friends who have helped our firm grow. To them, we offer a Sincere Thank You.

And, as our City enters its biggest celebration ever, that of its 125th Anniversary, we offer our **sincere congratulations** and best wishes to each and every resident. Mount Pulaski is indeed a City to be proud of!



FEED MIXING AND GRINDING has become an important service to the feeders and farmers of the community. Otto Bandelow is in charge of this operation.



NEW STORAGE AND OFFICE along I. C. in west part of city, built by Ryan Construction Co. These large bins erected in 1959 have a capacity of 250,000 bushels.

MOUNT PULASKI Farmers Grain & Elevator

PHONE: SW 2-5711

South Washington