



**INTERIOR OF WILBUR STOLL HOME** on southeast edge of city about two blocks from the explosion, was wrecked.

—Times-News Photo.



**NEW HOME OF MRS. GEORGE J. SMITH** showing roof damage when a piece of steel from the tank car hurtled through the air a distance of a half-mile, crashed through the roof.

—Times-News Photo.

## LIST OF INJURED TAKEN TO HOSPITAL

Nineteen persons were treated for cuts at St. Clara's hospital, and 17 were treated at Lincoln Memorial hospital. Three persons, Minnie Mayer, 78; Rena Buehler, 63, and Lillian Scroggin, 34, remained as patients at St. Clara's and 16 were dismissed after emergency treatment.

Those dismissed after treat-

## EXPLOSION—

Hardly a store front around the square was left intact, nearly all the plate glass show windows being demolished. More than half of the homes in the city were damaged in some way or another. Cardboard, boards and heavy paper were being used by residents to close up windows and doors. Anything to get their property closed from the elements.

Trucks from glass companies from Springfield, Decatur, Peoria and Auburn, were in the city Monday morning and by that evening many plate glass store windows had been replaced.

Although the hearts of residents were pretty heavy, everyone took hold on Monday morning and started sweeping, scooping and digging, and before nightfall much had been accomplished.

The Civil Defense set up a station at City Hall and volunteer help was dispersed from there to those calling for help. Men from our neighboring towns and communities were here to lend a helping hand when and where they could, and where they were needed worst.

### Heard and Felt Miles Away

Farm homes 4 and 5 miles away had windows broken out, the Christian Church in Lake Fork, 5 miles away had broken windows.

Heavy pieces of railroad equipment such as boxcar wheels, were thrown several hundred feet from the scene. Large pieces of metal from the tank car were blown into fields for more than half-a-mile and some were found imbedded in the soil to a depth of three feet.

Telephone service was hampered although not completely knocked out. At this point, certainly, praise should be given to telephone operators for their untiring work in getting emergency calls taken care of.

Power lines near the scene were torn to shreds and were left hanging down on fences near the area. Kenney, Chestnut, Latham and homes to the southeast of us were without electricity. Employees from the Central Illinois Electric & Gas Co., were immediately alerted and on the job and repairs were quickly made.

ment were: Madeline Erlenbush, 19, lacerations of the upper lip, chin and right knee; Donald Erlenbush, 19, cuts about the face and right side. Gary Shull, 19, cuts about the face and mouth; Laura Brown, 23, lacerated forehead.

### Others Injured

Darlene Wilham, 26, multiple abrasions about head and arms; Donald Wilham, 3, lacerated scalp; Avest Wilham, 30, puncture wound of right leg; Nancy Mittelsteadt, 27, multiple abrasions about head; Loren Mittelsteadt, 35, puncture wounds of the face and neck.

Ethel Allen, 5, lacerated left cheek; Mary Sue Lynch, 4, examined after falling from a car; Stephen Lynch, 12, cut on hand; Grace Roth, 72, small laceration on left foot; Fred Roth, 76, multiple abrasions about chest and scalp; Mary Rowe, cuts on forehead and neck.

Barbara Scheuler, Springfield, multiple face, ear and puncture wounds.

Those admitted at ALM hospital were: Ben Burkhart, 82; Frank Passmore, Sr., 64; Mrs. David Cheek, 79; Mrs. Bertha Smith, 77, and Anna Schafer, 84. The last three were admitted because of illness and not because of injuries suffered by the blast.

Those treated were: Willa Cullen, 85. Odessa Dittus, Minnie Edwards, 54; Marie Gaffney, 54; Treva Bobell, 54; Florence Wagner, Jess Turley, 52; Minnie Turley, Adelia Remmert, 58; Marie Remmert, 35.

Out-of-town visitors in the city who entered the hospital were: Alice Bucher, 26, Lincoln; Jwana Moore, 7, Beecher City.

## CHURCHES SUFFERED HEAVY DAMAGE

All five churches received extensive damage from the explosion on Sunday afternoon. The St. John's Lutheran Church had 9 windows broken or badly damaged. Plaster fell in the Sunday School rooms. Some of the walls were slightly bulged and several beam rafters cracked.

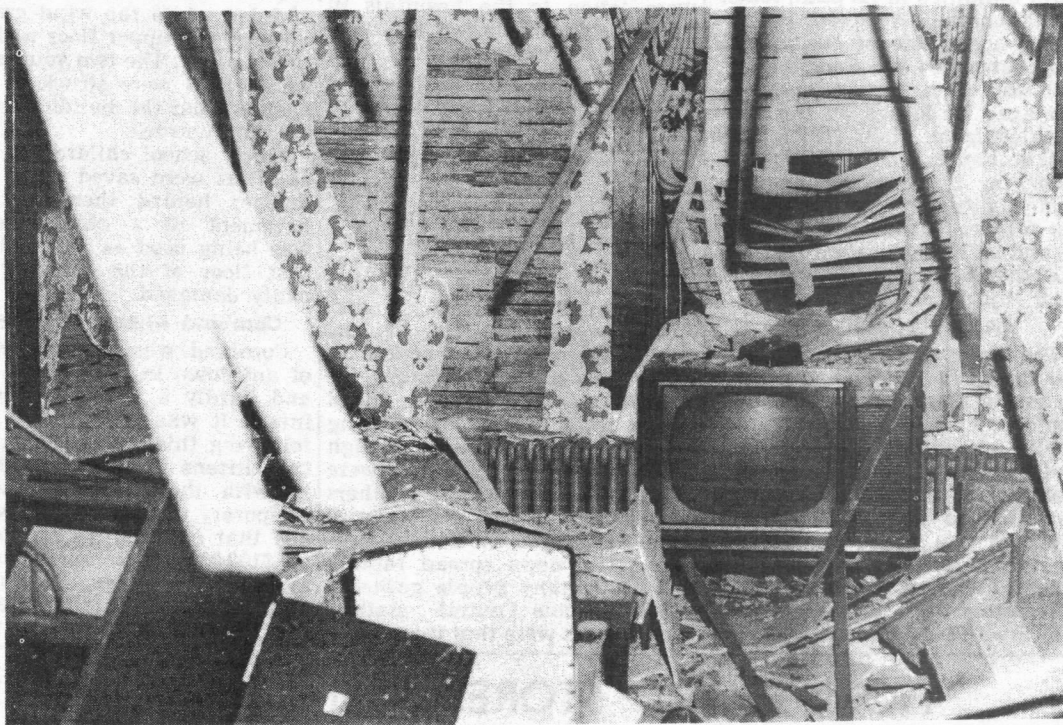
At the Christian Church, one large stained glass window, 9 small stained glass windows, 2 basement windows were destroyed. The south wall of the church was pushed out several inches. There are several split and broken rafters, two 12"x12" beams and 6"x6" beams were split. Several pews were damaged and splintered, glass and plaster was all over the building.

All but two of the stained win-



**THIS TREMENDOUS CRATER** approximately 35 feet deep and 45 feet across, was made at the scene of the explosion of the tank car, here, June

1958. It was a terrifying sight to see this big excavation and realize the terrific explosion that it took to create this monster hole.—Times-News Ph.



**INTERIOR OF FRED HORN HOME** which was about an eighth of a mile southwest of the scene of the explosion. The home was a total wreck as

was the barn and other outbuildings. A new home has been built on the site by Mr. Horn. —Times-News Photo.



**THIS DEVASTATED AREA**, adjacent to the explosion scene, was occupied by the Parro Construction Co. who were rebuilding Route 121. Most

of their equipment was totally destroyed but fortunately no one was about the premises that Sunday afternoon at 4 o'clock.—Times-News Ph.

dows of the St. Thomas Aquinas Catholic Church were broken. All the stations of the Cross except three and the Statute of the Blessed Virgin were damaged. A few pews were damaged. Plaster was down in spots, and the altar was moved three inches. The chimney had to be repaired, also.

At the Zion Lutheran Church, in the new educational building, 16 sections of windows and frames on the south and east, were completely wrecked. Three outside doors were completely ruined. One inside door was blown

off the casing and one torn loose. The new wood folding doors between the old and new building were broken. The floor at places was raised an inch or two as well as a section of the roof. Light fixtures were torn loose and various crack showed up in some blocks. Glass was imbedded in the wooden panels and in the new school desks and tables in the Sunday School rooms.

In the church proper, 3 imported Art windows on the south, were considerably damaged. Both of the chimneys were cracked so

that the tops had to be taken off. There was a lot of plaster cracks and damage of glass to the church pews. However, both buildings remained structurally sound.

At the Methodist Church 28 stained windows and 6 basement windows were broken. The roof will have to be replaced and all the church will have to be replastered. The studding of the sidewalls were broken and loosened. Glass damaged furnishings including the organ, piano and pews.