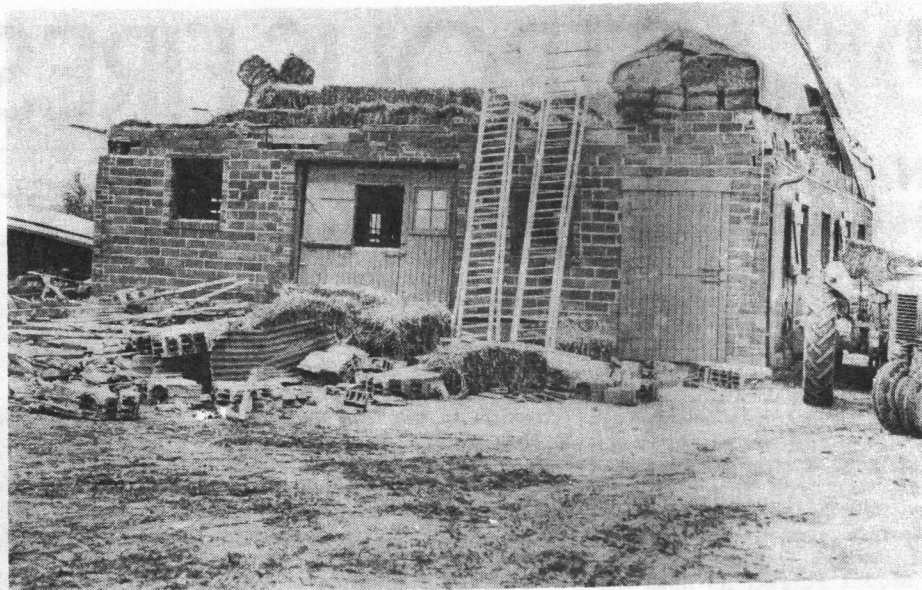
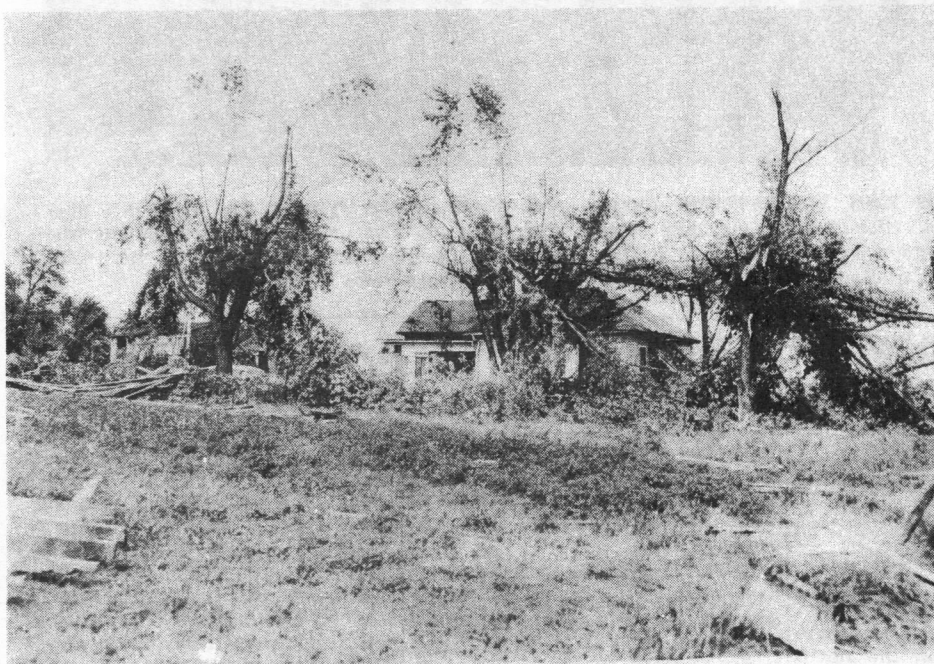




CHARLES McGUIRE FARM HOME near Heman, between Latham and Warrensburg was completely wrecked. Mr. McGuire was the only person seriously injured. —Times-News Photo.



ROOF OF NEW BARN at William McGee farm south of Mount Pulaski, was blown off —Times-News Photo.



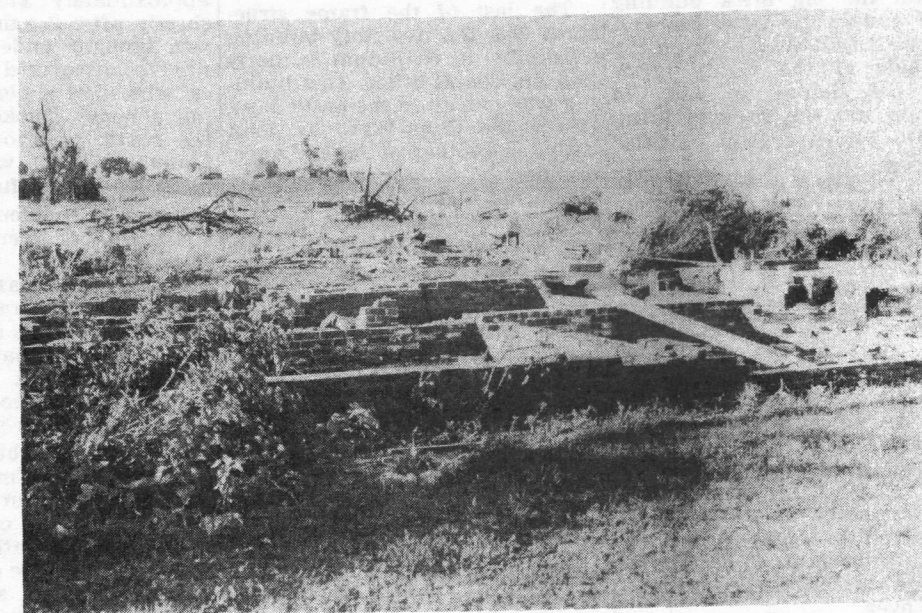
JAKE ERLNBUSH FARM HOME, southwest of Mount Pulaski, was badly damaged and trees torn asunder. —Times-News Photo.



PAUL McCUBBIN HOME, south of town, was so badly damaged it was torn down. —Times-News Photo.



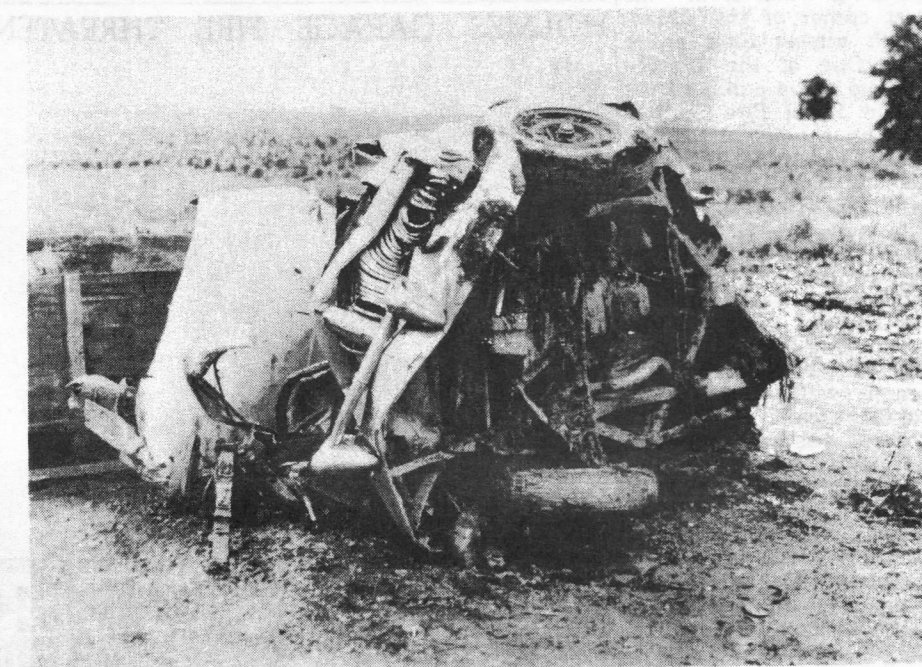
SULLIVAN SERVICE STATION and Colonial Diner looked like a river bottom scene after heavy rain which accompanied tornado. —Times-News Photo.



DEMOLISHED HOME AND FARM BUILDINGS of Mr. and Mrs. Henry Sandleben, south of Narita. —Times-News Photo.



JACK POPE FARM HOME and all outbuildings, southwest of Latham, were completely demolished. —Times-News Photo.



THIS WAS AN AUTOMOBILE before the storm hit it, with Ed Culp of Latham driving between Warrensburg and Latham when the tornado took his car several hundred feet into a corn field, lifting it over a fence and rolling it up like a ball. Ed miraculously escaped serious injury when he was thrown from the car. —Times-News Photo.